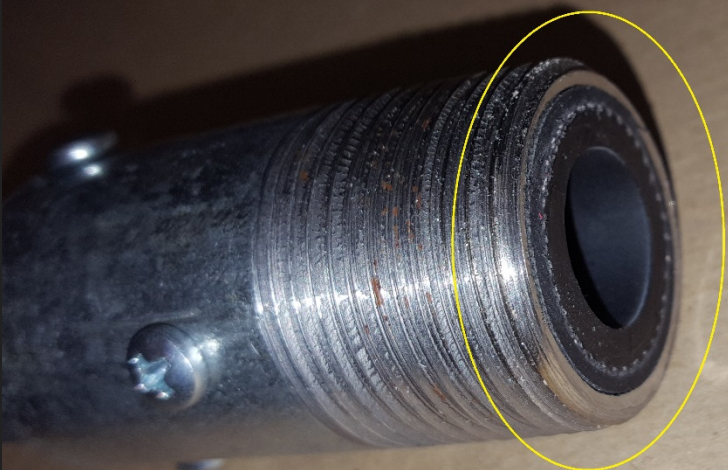


BLAST HOSE ASSEMBLY

1/2" Pro Finish Blast Hose/Nozzle Coupling



Step # 3



*The Hose is cut even with the end
of the Adapter
This is an IMPORTANT Step!*

STEP # 4



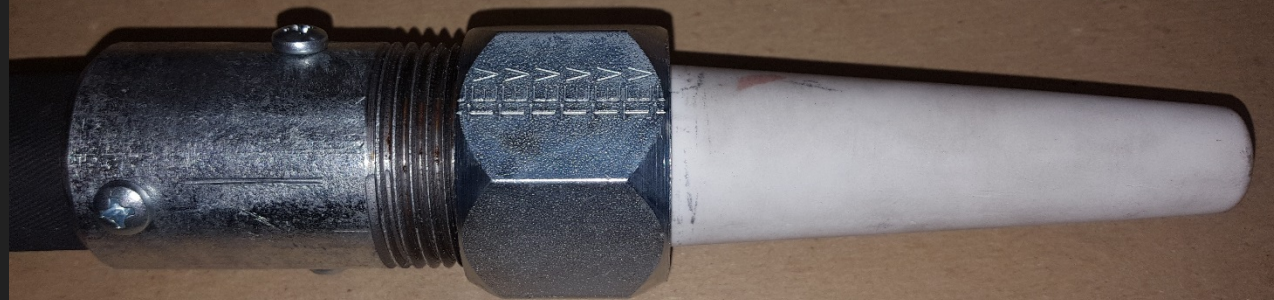
*When Assembling the Nozzle adapter and nozzle,
A Nozzle washer Must be used to seal the nozzle
to the hose!*

STEP #5

**Insert the nozzle Washer into the
Nozzle Adapter!**



STEP #5



**Screw the Nozzle adapter onto the Nozzle coupling
Hand Tight!
This will seal out any air leaks that cause premature Wear!
The nozzle washer must seat against the hose and the Coupling!**